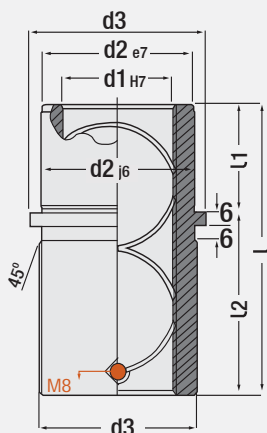


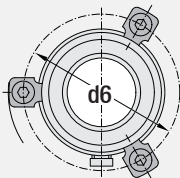
Guide Bush, Thin & Long Type (with collar & lubricating)

Code: **G33**

For being GTH Die Components products having long life and maximum resistance against abrasion, unique precision has provided at surface roughness. This is also created specific bushing system.



Clamping Detail Code: **G100**



4 pcs. clamp for d1 = 38 mm and larger sizes.

Mounting Details:

Code: **G33**

Code: **G33K**

∅ d1	d6	∅ d1	d6
16	46.2	20	52.4
20	46.2	25	60.8
25	51.4	30	69.0
30	56.6	40	79.0
40	66.8	50	93.2
50	77.0	63	108.4
		80	131.5

∅ d1	l mm	∅ d2	∅ d3	l1 mm	l2 mm
16	70	28	34	23	47
20	70	28	34	23	47
25	80	34	39	23	57
30	90	39	44	37	53
40	100	50	54	37	63
50	120	60	64	47	73

Order: **G33**. d1 x l x l1

Material: 1.7131 (16MnCr5)
Hardness: 58 - 62 HRC



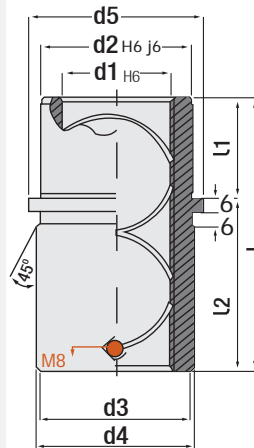
IMPORTANT!
Pls. lubricate from grease nipple on bush occasionally.

Lithium Grease - 1kg.
Order Code: W150206

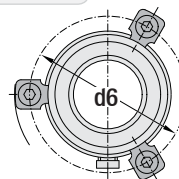
Guide Bush, Thick & Long Type (for heavy dies / with collar & lubricating)

Code: **G33K**

Thick type steel bushes: Please don't use two products without oil groove together. One of product in guide pillar or bushes should be used as set with oil groove. While using guide pillar and bush sets, should be considered that both of them have same brand. Because, grinding tolerance can be different in different guide pillars and bushes. Also, this can be caused big problems during both mounting and operating. The dimensions not giving their tolerance are subjected to general tolerance (production according to standards).

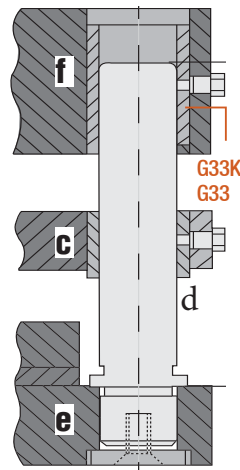


Clamping Detail Code: **G100**



4 pcs. clamp for d1 = 38 mm and larger sizes.

∅ d1	l mm	∅ d2	∅ d3	∅ d4	∅ d5	l1 mm	l2 mm
19	43	32	32	39	40	23	20
	59						36
24	59	40	40	46	48	23	36
	79						56
32	75	48	48	53	56	30	45
	93						63
38	82	58	58	63	66	37	45
	108						71
48	97	70	70	77	80	47	50
	127						80
60	116	85	85	92	95	60	56
	150						90
80	120	105	105	115	118	60	60
	150						90



Order: **G33K**. d1 x l x l1

Material: 1.7131 (16MnCr5)
Hardness: 58 - 62 HRC